

Modular Cooking Range Line EVO900 Full Module Gas Fry Top, Chromium Plated

ITEM # _____

MODEL # _____

NAME # _____

SIS # _____

AIA # _____

**392054 (Z9FTGHCS00)**

Gas fry top with polished chrome smooth sloped cooking plate, thermostatic control, splashback and scraper included, full module

392055 (Z9FTGHCP00)

Gas fry top with polished chrome 2/3 smooth and 1/3 ribbed sloped cooking plate, thermostatic control, splashback and scraper included, half module

Short Form Specification

Item No. _____

Smooth polished chrome cooking surface 20 kW gas powered burners with thermostatic valve and self stabilizing flame. To be installed on open base installations, bridging supports or cantilever systems. Removable drawer below the cooking surface for the collection of grease and fat. Body and work top of unit entirely in stainless steel with Scotch Brite finish. Extra strength work top in heavy duty 2 mm stainless steel. Right-angled side edges to allow flush-fitting junction between units.

Main Features

- Unit to be mounted on open base cupboards, bridging supports or cantilever systems.
- Large drain hole on cooking surface permits the draining of fat into large 1,5 liter collector placed under the cooking surface.
- Safety thermostat with temperature markings for additional safety.
- Stainless steel high splash guards on the rear and sides of cooking surface. Splash guards can be easily removed for cleaning and are dishwasher-safe.
- Piezo spark ignition with thermostatic valve for added safety.
- Units have separate controls for each half module of the cooking surface.
- The special design of the control knob system guarantees against water infiltration.
- IPX5 water protection.
- Temperature range from 90° up to 270°C.
- Polished chromium surface avoids the mixing of flavors when passing from one type of food to another.
- Cooking surface 15mm thick polished chrome for optimum grilling results and ease of use.
- Suitable for countertop installation.

Construction

- All exterior panels in Stainless Steel with Scotch Brite finishing.
- AISI 304 stainless steel worktop, 2mm thick.
- Model has right-angled side edges to allow flush fitting joints between units, eliminating gaps and possible dirt traps.
- Cooking surface completely smooth. (only for 392054)
- Unit is 900mm deep to give a larger working surface area.
- Cooking surface 2/3 smooth and 1/3 ribbed. (only for 392055)

APPROVAL: _____

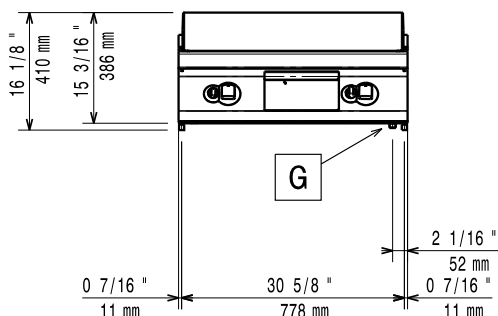
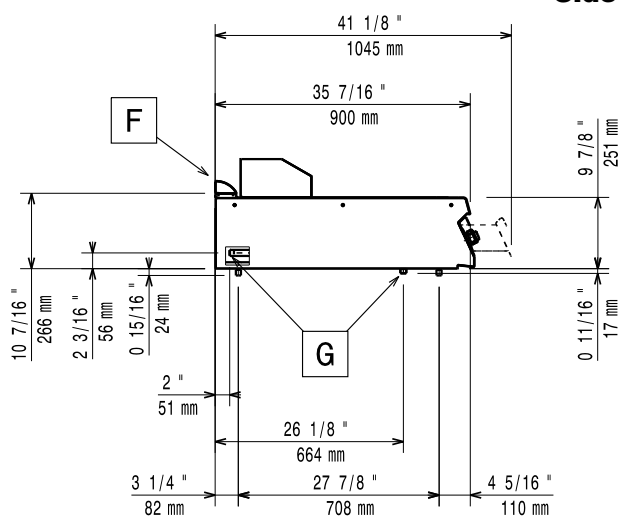
Included Accessories

- 1 of Scraper for smooth plate for fry tops PNC 164255
- 1 of Scraper for ribbed plate fry tops - kit includes knife blades for both smooth and ribbed surface (only for 392055) PNC 206420

Optional Accessories

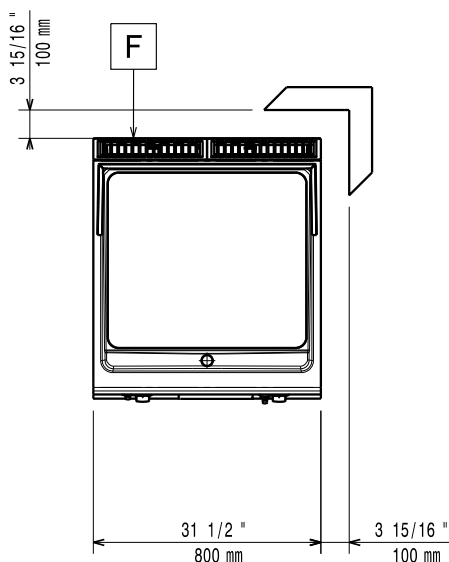
- Scraper for smooth plate for fry tops PNC 164255 ☐
- Junction sealing kit PNC 206086 ☐
- Draught diverter, 150 mm diameter PNC 206132 ☐
- Matching ring for flue condenser, 150 mm diameter PNC 206133 ☐
- Support for bridge type installation, 800 mm PNC 206137 ☐
- Support for bridge type installation, 1000 mm PNC 206138 ☐
- Support for bridge type installation, 1200 mm PNC 206139 ☐
- Support for bridge type installation, 1400 mm PNC 206140 ☐
- Support for bridge type installation, 1600 mm PNC 206141 ☐
- Side handrail for right/left hand PNC 206165 ☐
- Frontal handrail 800 mm PNC 206167 ☐
- Large handrail (portioning shelf) 800 mm PNC 206186 ☐
- Frontal handrail 1200 mm PNC 206191 ☐
- Frontal handrail 1600 mm PNC 206192 ☐
- Flue condenser for 1 module, 150 mm diameter PNC 206246 ☐
- Chimney upstand, 800 mm (only for 392054) PNC 206304 ☐
- 2 side covering panels, height 250 mm, depth 900 mm PNC 206321 ☐
- Grease/oil container kit for frytops PNC 206346 ☐
- Chimney grid net, 400mm PNC 206400 ☐
- Scraper for ribbed plate fry tops - kit includes knife blades for both smooth and ribbed surface (only for 392055) PNC 206420 ☐
- - NOT TRANSLATED - PNC 206455 ☐
- KIT G.25.3 (NL) GAS NOZZLES FOR 900 FRYERS PNC 206467 ☐
- Water drain for full module fry top PNC 216153 ☐
- Pressure regulator for gas units PNC 927225 ☐

Modular Cooking Range Line EVO900 Full Module Gas Fry Top, Chromium Plated

Front

Side


EQ = Equipotential screw

G = Gas connection

Top


Gas

Natural gas - Pressure:

392054 (Z9FTGHCS00)

7" w.c. (17.4 mbar)

Gas Power:

20 kW

Standard gas delivery:

Natural Gas G20 (20mbar)

Gas Type Option:

LPG; Natural Gas

Gas Inlet:

1/2"

Key Information:

Working Temperature MIN:

90 °C

Working Temperature MAX:

270 °C

External dimensions, Width:

800 mm

External dimensions, Depth:

900 mm

External dimensions, Height:

250 mm

Net weight:

105 kg

Shipping weight:

392054 (Z9FTGHCS00)

101 kg

392055 (Z9FTGHCP00)

100 kg

Shipping height:

580 mm

Shipping width:

392054 (Z9FTGHCS00)

1020 mm

392055 (Z9FTGHCP00)

1010 mm

Shipping depth:

860 mm

Shipping volume:

392054 (Z9FTGHCS00)

0.51 m³

392055 (Z9FTGHCP00)

0.5 m³

[NOT TRANSLATED]

N9RG

Cooking surface width:

730 mm

Cooking surface depth:

700 mm

If appliance is set up or next to or against temperature sensitive furniture or similar, a safety gap of approximately 150 mm should be maintained or some form of heat insulation fitted.